

# NEW MEXICO Impact Investing Collaborative

Creating Efficiencies • Enabling Collaboration • Reducing Barriers

NMIIC's Targeted Transformations are:

1. *Facilitate Capital Deployment.* Support NMIIC members as well as the broader impact investing field to more easily deploy capital for impact in New Mexico.
2. *Inclusive Access to Capital.* Enable capital to flow to support more inclusive economies within the state and overcome and transform barriers to accessing capital.
3. *Strategic Capital Alignment.* Align investment capital with existing and emerging opportunities that represent key points for systemic transformation within and across New Mexico communities.

The New Mexico Impact Investing Collaborative's Mission is to support healthy, equitable, sustainable, and economically vibrant communities by facilitating and increasing the supply and effective deployment of impact investing capital within the state.

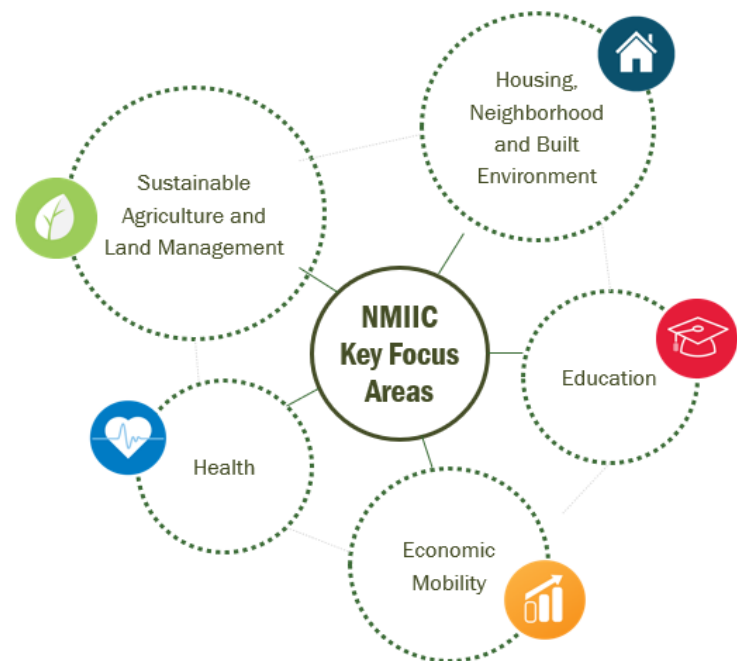
SUPPORTED BY:



## Our Impact Priorities

**NMIIC's purpose** is to increase capital flows into opportunities that positively impact New Mexico communities.

NMIIC targets five distinct yet interconnected priorities, each providing a window to the deeper systemic barriers affecting the flow of capital in the state.





## Our Core Activities & Stakeholders

### Core Activities:

**Impact investment collaboration** including shared pipeline and deal flow, due diligence and resource supporting best practice impact investment execution.

**Education & Peer Learning Opportunities** to develop local practitioners and institutional impact investment capacity.

### Stakeholders:

**Communities and community leaders throughout the State** seeking capital to develop and expand projects benefiting community health, social equity and resiliency.

**Foundation, asset management, philanthropic, corporate and nonprofit professionals** seeking to start or expand impact investing activities or partner with other impact investors on innovative and high impact projects.

**Mission-driven enterprises** (non-profit, for-profit and intermediaries) seeking to raise impact investment capital for the benefit of local communities.